

SIGFOX PT100 INPUT SENSOR



SKU: WSSFC-PT100

SIGFOX PT100 INPUT SENSOR WSSFC-PT100



WSSFC-PT100-H1.PNG



WSSFC-PT100 is a Sigfox wireless node with modular design connected to PT100 temperature sensor, based on 10-year experience in design and manufacturing Industrial sensor of Daviteq Company. It has been factory pre-calibrated for high accuracy and quick set-up. The Ultra-Low Power Power design and smart firmware allow the sensor to last up to 10 years with 02 x AA battery (depending on configuration). The sensor will transmit data in kilo-meters distance to Sigfox basestation. WSSFC-PT100 can support all regions of Sigfox network in over the World, RC1, RC2, RC3, RC4, RC5, RC6, RC7. Some typical applications are temperature monitoring for factories, agriculture, boilers, ...



SIGFOX READY

Device are best operating performance on the SIGFOX network



10 YEAR BATTERY

Ultra-low power sensing technology from Daviteq with Ultra-low power wireless technology allow the sensor can last up to 10 years with 2 x AA batteries 1.5VDC



PRE-CALIBRATED

Sensors are pre-calibrated at factory to deliver high accuracy and quick installation



OUTDOOR & EASY CLEANING

IP67 design for both Indoor and Outdoor applications and easy cleaning

CONNECT WITH PT100 TEMPERATURE SENSOR



WSSFC-PT100-H2.PNG

DAVITEQ TECHNOLOGIES INC

No.11 Street 2G, Nam Hung Vuong Res., An Lac Ward, Binh Tan Dist., Ho Chi Minh City, Vietnam

+84.28.6268.2523 / 6268.2524

info@daviteq.com

www.daviteq.com

JAN-2021 | Doc No: WSSFC-PT100-DS-EN-10

1/4

SPECIFICATION

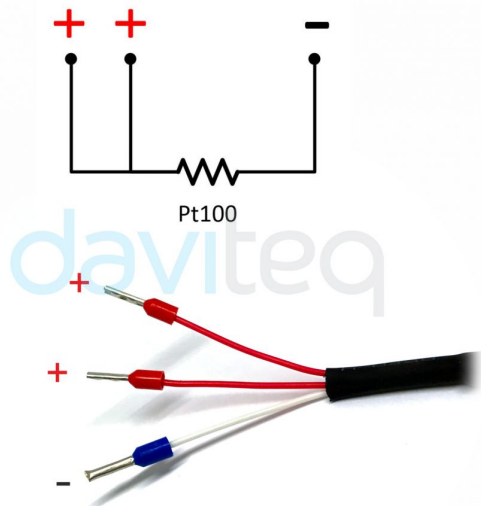
Input	PT100 Temperature Sensor
Accuracy	0.05%
Sensor port connector	PG9 Connector
Sigfox zones	select RC2-RC3-RC4-RC5 or RC1-RC6-RC7
Antenna	Internal Antenna 2.67 dbi
Battery	02 x AA Type 1.5VDC, working time up to 10 years (depends on configuration)
RF Module complies to	CE, FCC, ARIB
Working temperature	-40oC..+60oC (using Energizer Lithium Ultimate AA battery)
Dimensions	H118xW73xD42
Net-weight	250 grams
Housing	Polycarbonate & POM plastic, IP67

SIGFOX NODE CONNECT WITH
PT100 TEMPERATURE SENSOR VIA PG9 CONNECTOR



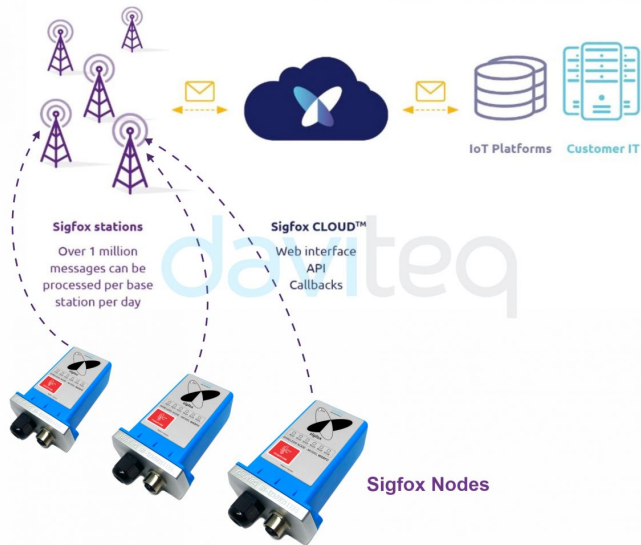
WSSFC-PT100-H3.PNG

WIRING THE PT100 TEMPERATURE SENSOR

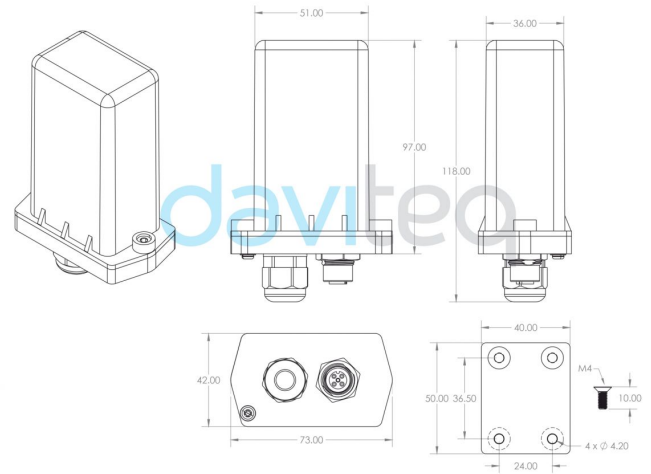


WSSFC-PT100-H4.PNG

SYSTEM ARCHITECTURE



WSSFC-PT100-H5.PNG

DIMENSION DRAWING OF WIRELESS SENSOR
(Unit: mm)

WSSFC-PT100-H6.PNG

RECOMMENDED BATTERIES

E91 AA Alkaline battery

-18 .. + 60 oC working temperature
10-year shelf life
3000 mAH Capacity
Price: 1X

L91 AA Lithium battery

-40 .. + 60 oC working temperature
20-year shelf life
3500 mAH Capacity
Price: 3.5X

WSSFC-PT100-H7.PNG

BLANK

WSSFC-PT100-H8.PNG

ORDERING INFORMATION

ITEM CODE	DESCRIPTIONS
WSSFC-PT100-9-01	Sigfox PT100 input sensor, -200..+750°C, Internal antenna, Type AA battery 1.5VDC, IP67, RC2-RC3-RC4-RC5 zones
WSSFC-PT100-8-01	Sigfox PT100 input sensor, -200..+750°C, Internal antenna, Type AA battery 1.5VDC, IP67, RC1-RC6-RC7 zones