

XOMOX®

Technische Dokumentation Technical Documentation



XOMOX® XACT Vane Type Actuators



XACT Pneumatic actuators are ideal for all rotation stem valves

- **Compact design**
- **Only one moving part**
- **No air leakage**
- **Light weight**
- **External corrosion resistant coating**
- **Long cycle life**
- **Maximum cycling speed**
- **Maximum torque output also at low working pressure**
- **Air connection on both sides possible**



Design Features & Benefits

XACT pneumatic actuators are ideal for all rotation stem valves with 0-90° rotation.

The simple proven construction offers direct rotary output eliminating the need to convert from linear to rotary motion.

The seals between housing and vane are accomplished by a special one-piece o-ring. Precised machining and special internal surface treatment guarantee tight sealing, long life and minimal maintenance.

Simple mounting of limit switches, manual override, positioners etc. on actuator top.

Scope of Supply

Design Versions

Series XACT for Torques up to 2000 nm

TYPE MX 3000 for Torques from 1500 up to 3300 nm

Materials

Body	Aluminium-Tioxal-coated
Paddle	Aluminium
Seal	Buna-N, Viton-O

Operating Pressure: Max. 8 bar

Temperature Range:

Buna-N Ring: 290 K to 380 K (-17 °C to +107 °C or 0 F to +225 F)

Viton-O-Ring 233 K to 453 K (-40 °C to +180 °C or -40 F to + 356 F)

Cycling rate:

Up to 8 cycles per minute.

Cycling Time:

1 to 7 sec

Working Media:

Air hydraulic oil or other (non-corrosive) media.

Available Actuator devices and accessories

Air Connection on both sides possible

Options

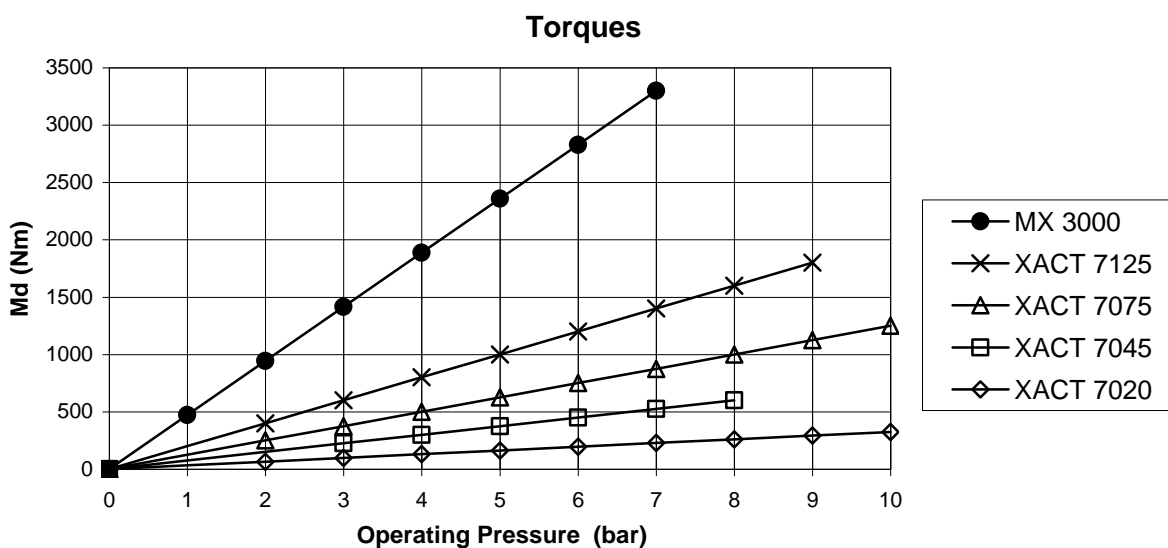
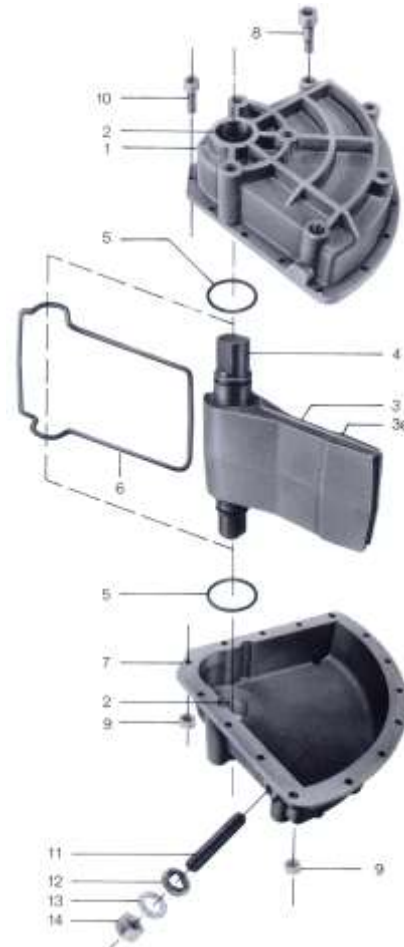
Solenoid valves, Limit switches, Safe systems

Special Versions (Examples):

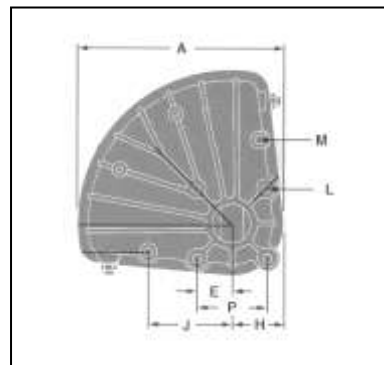
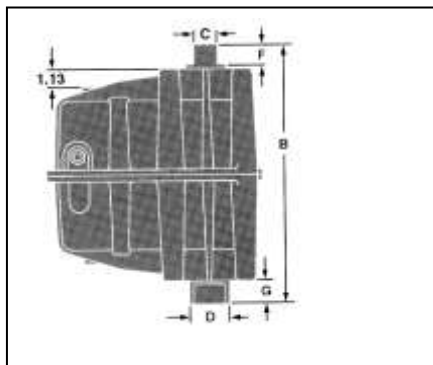
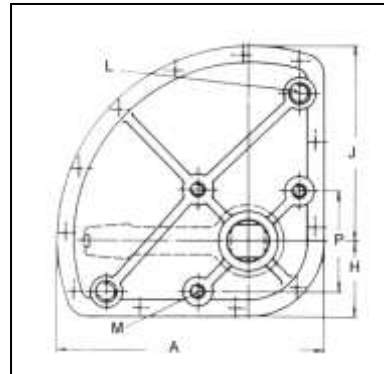
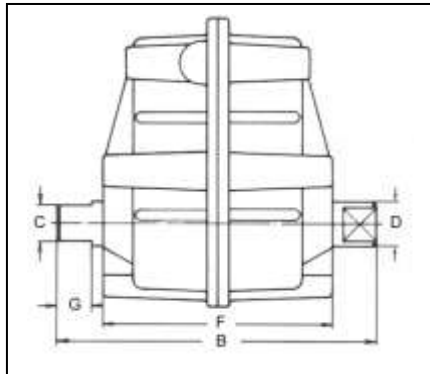
- Stainless steel shaft
 - Extended screws
 - Specially greased
 - PTFE inner coating
 - External coating acc. to customer requirements
 - Cryogenic application (- 40°C)
 - High temperature application (300°F)
- and more options

Materials of Construction

Item	Qty.	Description	Material
1	1	Housing top I	Die-cast aluminium
2	1	Bushing	Bronze
3	1	Paddle I	Die-cast aluminium
3a	1	Safety Bearing	Nylon
4	1	Shaft	Steel
5*	2	Shaft o-ring	Buna-N
6*	1	Paddle seal	Buna-N
7	1	Housing bottom	Die-cast aluminium
8	2	Alignment dowel	Steel cadium plated
9	15	Nut	Stell cadium plated
10	15	Housing screw	Steel cadium plated
11	2	Stroke adjustment screw	1.4541 (stainless steel)
12	2	Gasket	Rubber/Steel
13	2	Disc	Steel cadium plated
14	2	Lock nut	Steel cadium plated



Technical Data / XACT Series



MX 3000

	7020	7045	7075	7125	MX 3000
A	174.5	188.5	236	276.4	346
B	163.5	266.5	266.5	254	422
C	19	28.7	28.7	28.7	38.1
D	28.8	36.6	36.6	36.6	63.4
E					58
F	112.7	189	189	177.8	33
G	19	28.7	28.7	28.7	39
H	52.5	66.5	66.5	-	88
J	122	169.5	169.5	-	140
L	¼ NPT	¼ NPT	¼ NPT	3/8 – 18 NPT	38
M	M10	M14	M14	M14	M 18
P	76	89	89	-	117

	7020	7045	7075	7125	MX 3000
Air Consumption in m³ for 90°	670	1803	1950	3800	
Stroke Adjustment	74°-110°	80°-110°	74°-110°	80°-102°	70°-110°
Weight (kg)	3.2	6.4	8.2	10.0	29.6

XOMOX will fit any other rotary actuators (pneumatic, hydraulic, electric) per customer requirements. This also applies to all suitable solenoid and pilot valves, limit switches, positioners and other accessories.

Crane Co., and its subsidiaries cannot accept responsibility for possible errors in catalogues, brochures, other printed materials, and website information. Crane Co. reserves the right to alter its products without notice, including products already on order provided that such alteration can be made without changes being necessary in specifications already agreed. All their trademarks in this material are property of the Crane Co. or its subsidiaries. The Crane and Crane brands logotype are registered trademarks of Crane Co. All rights reserved.