

INSTRUCTION MANUALS

OUTPUT PROTOCOL SERIAL TYPE S2

OF PULSECAP10 FUEL LEVEL SENSOR

1. Sensor code:

- CAP10S2...

2. Specifications sensor output type S2:

- Output signal: Tx (only transmit signal, not receive signal)
- Serial port: 19200 Baud, Data 8 bit, No Parity, 1 Stop bit

3. Data transmission frame:

With default cycle is 1 second, the sensor will emit a string of data in the following format:

FULS:F=0034 t=20 N=0035.0

In there:

F=0034 : F= fuel lever **unfiltered** value, unit: per mille (4 numbers)

t=20 : t = board temperature (2 numbers)

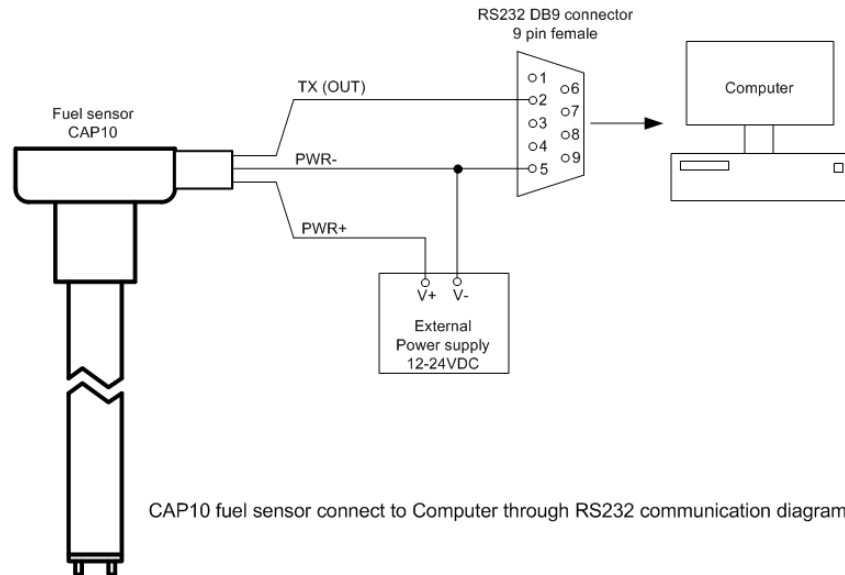
N=0035 : N= fuel lever **filtered** value, unit: per mille (4 numbers)

".0" : end command

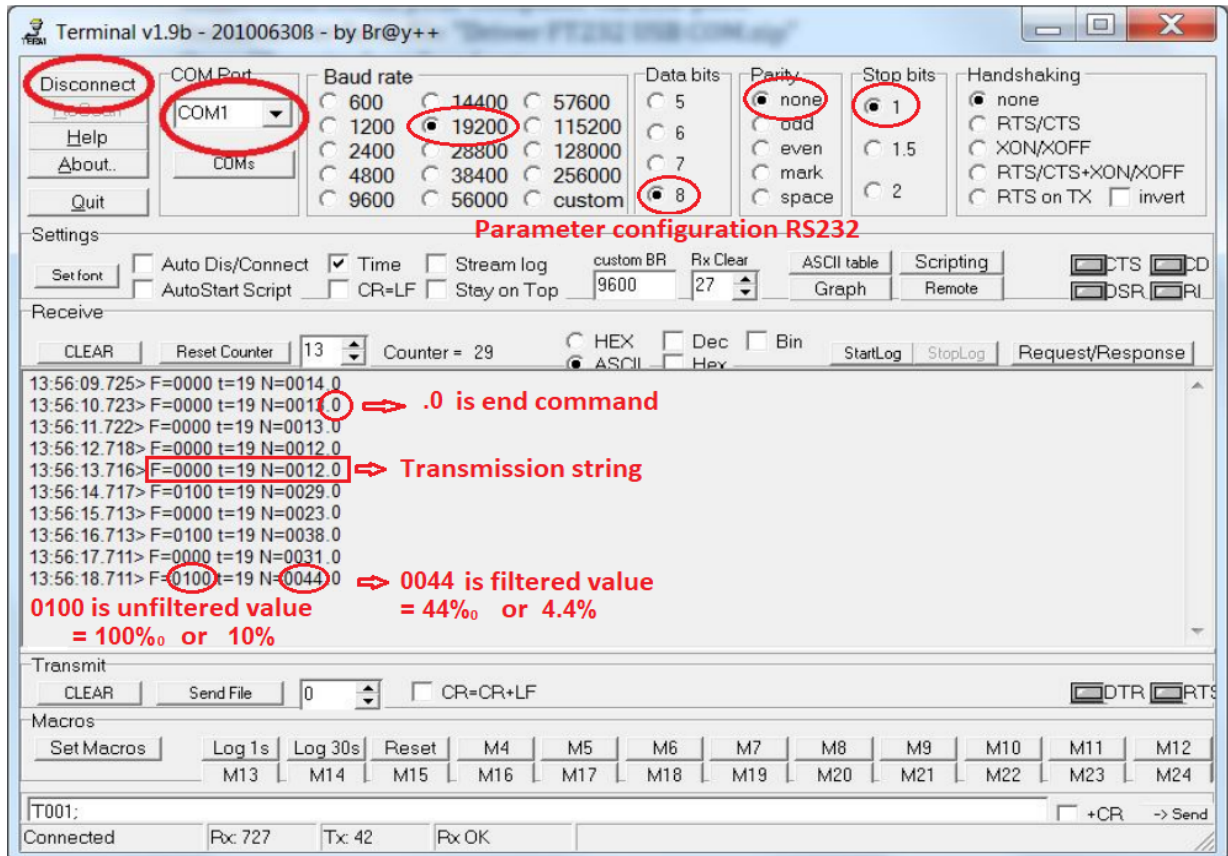
****Values: 0034, 20, 0035 above are example values.**

4. Use computer diagnostic output sensor type S2:

- Make sure the computer has an RS232 port or signal converter USB to COM RS232;
- Connect the sensor to the power supply and the signal to the computer as wiring diagram below:



- Open software **Terminal**, it is software that checks and simulates signal transmitted on the computer's RS232 port;
- *** Download the software here:*
<http://hw-server.com/terminal-terminal-emulation-program-rs-232>
- Set RS232 port is the same as that of the sensor as item 2;
- Press the **Connect** button, on the screen will display the data as shown below:



Dai Viet Controls & Instrumentation Company Ltd.

No.11 Street 2G, Nam Hung Vuong Res., An Lac Ward, Binh Tan Dist., Ho Chi Minh City, Vietnam.

Tel: +84-28.6268.2523

Hotline order: +84.932.740.966

Email: sales.admin.2@daviteq.com

Hotline services: +84.903.791.445